



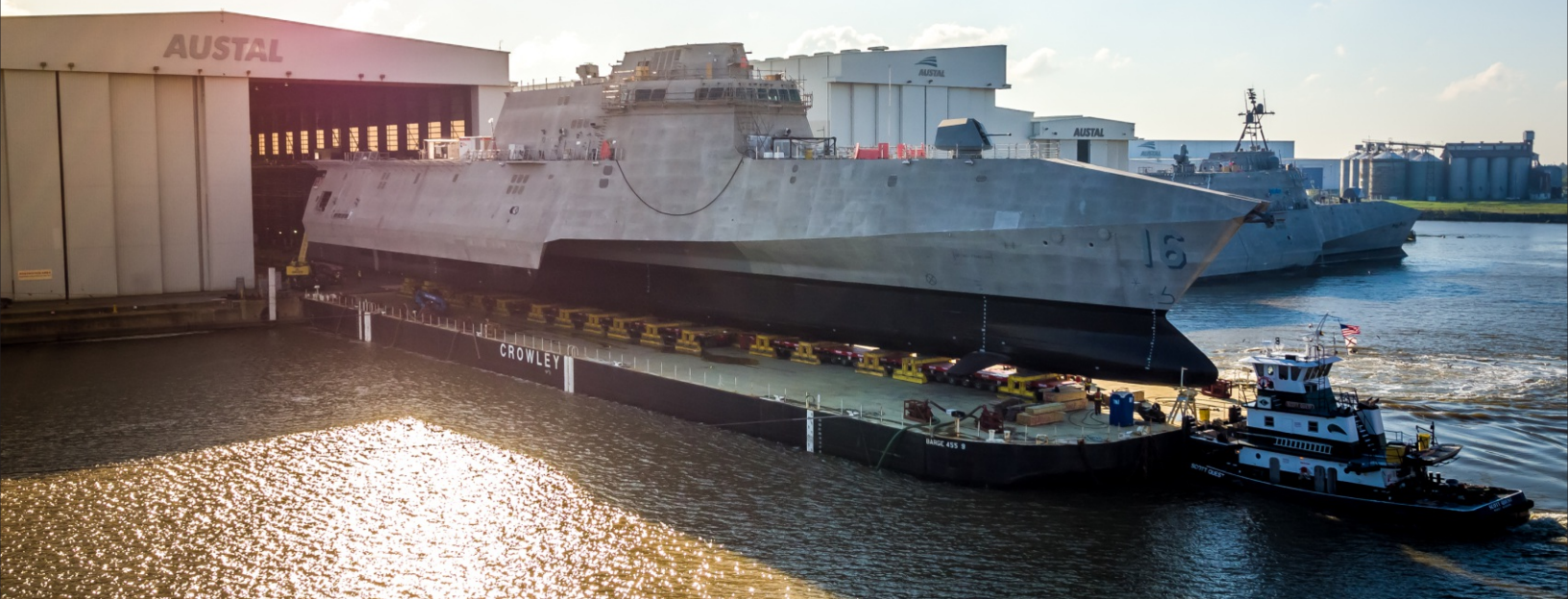
## In This Issue:

**BERARD**  
SINCE  
1945  
The Mega Transport Experts

- > The Shipyard | Launching Tulsa
- > New York Bound! | The NYC Ferry Transport
- > Team Member Spotlight | Caleb Segura



# The Shipyard Launching Tulsa



## Job Specs

**Weight:** 2,800 Tons

**Dimensions:** 418'W x 107'L

**Equipment Used:** 104 axle lines of SPMTs, loading ramps, 18 high volume water pumps, 425' x 126' x 25' deck barge, numerous 65 ton winches and tugs

The Berard Team was proud to once again take a pinnacle role in transporting the Navy's newest addition to its fleet, Tulsa—a 418'L x 107'W Littoral Combat Ship (LCS)—built with pride by Austal in Mobile, Alabama. Berard provided a turnkey service and accomplished the task using 104 axle lines of self-propelled modular transporters. The team rolled the 2,800 ton LCS from the final assembly bay to a waiting deck barge all in record time and keeping the project ahead of schedule. The LCS was then barged down river for trans-loading from deck barge to dry dock. The entire process was accomplished safely and in only one day. Congrats to the team members and everyone involved for another safely completed project!









# New York Bound! The NYC Ferry Transport



## Job Specs

**Weight:** 45,000 lb.

## Dimensions:

85' L x 26' W

## Equipment Used:

6 axle line SPMT,  
support stands and  
cribbing

The City of New York will be getting a new fleet of ferry boats and this was one of the first to hit the water with the Berard Team helping to make that possible. The team utilized stands and cribbing stacked on top of a 6 axle line SPMT to support the catamaran hull at its center. Berard team members began to maneuver the vessel through the tight fabrication yard to a pair of cranes which would lift the vessel from Berard's SPMT. With the cranes rigged, they began to lift the vessel and remove the SPMT from beneath. The vessel then started its final lift to its first taste of water. Everything went smoothly with a happy client and team. Berard was proud to play a part of New York's ferry fleet expansion project.





# Caleb Segura

## Facility Support



In November of 2014, Caleb Segura joined the Berard Team. He's a great guy who loves his job. Caleb helps keep our facility running by providing the support it needs like loading trucks, moving trailers and assisting with other facility operations. He's always there to lend a hand to get the job done.

Caleb comments, "Berard is a good place to work. You learn new things everyday and everyone is close like family. The equipment is something you don't see everyday and I really like working with it."

When not at work, Caleb enjoys being with family as well as enjoying the great outdoors. He is engaged to his fiancée, Lexi, and they have a dog named Sweetie.



# Happy Birthday!

**From The Berard Team**

**Happy Birthday to These Dedicated Team Members!**

**Jordan Tyler  
Nick Chastant**